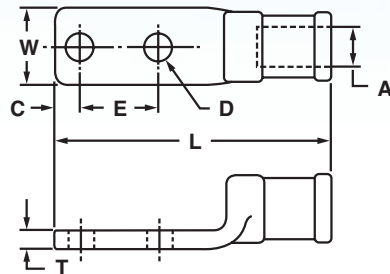


Heavy Duty Two Hole Cast Copper Compression Lugs

Type TLU-D

- Provides excellent mechanical strength
- Cast out of pure copper alloy for high conductivity
- Entire connector is electro-tin plated for corrosion resistance
- Can be installed with existing hydraulic crimping tools



CATALOG NUMBER	A CONDUCTOR SIZE	D BOLT SIZE	APPROXIMATE DIMENSIONS (IN.)					T & B DIE INDEX NO.
			L	W	T	C	E	
TLU-W8D	8 Str.	1/4	2.00	.50	.13	.34	.63	29
TLU-W6D	6 Str.	1/4	2.00	.50	.13	.34	.63	29
TLU-W4D	4 Str.	1/4	2.00	.50	.13	.34	.63	29
TLU-W2D	2 Str.	1/4	3.00	.75	.25	.50	.75	45
TLU-W1D	1 Str.	1/4	3.00	.75	.25	.50	1.00	45
TLU-1/0D	1/0 Str.	3/8	3.00	.75	.25	.50	1.00	45
TLU-2/0D	2/0 Str.	3/8	4.63	1.00	.28	.63	1.75	66
TLU-3/0D	3/0 Str.	1/2	4.63	1.00	.28	.63	1.75	66
TLU-4/0D	4/0 Str.	1/2	4.63	1.00	.28	.63	1.75	66
TLU-025D	250 kcmil	1/2	4.88	1.19	.31	.63	1.75	76
TLU-030D	300 kcmil	1/2	4.88	1.19	.31	.63	1.75	76
TLU-035D	350 kcmil	1/2	5.38	1.38	.38	.63	1.75	99
TLU-040D	400 kcmil	1/2	5.38	1.38	.38	.63	1.75	99
TLU-050D	500 kcmil	1/2	5.38	1.38	.38	.63	1.75	99
TLU-060D	600 kcmil	1/2	5.38	1.63	.44	.63	1.75	112
TLU-070D	700 kcmil	1/2	5.38	1.63	.44	.63	1.75	112
TLU-075D	750 kcmil	1/2	5.38	1.63	.44	.63	1.75	112
TLU-080D	800 kcmil	1/2	5.75	1.88	.47	.63	1.75	130
TLU-090D	900 kcmil	1/2	5.75	1.88	.47	.63	1.75	130
TLU-100D	1000 kcmil	1/2	5.75	1.88	.47	.63	1.75	130
TLU-125D	1250 kcmil	1/2	5.00	2.25	.50	.63	1.75	150
TLU-150D	1500 kcmil	1/2	5.00	2.25	.50	.63	1.75	161
TLU-175D	1750 kcmil	1/2	6.63	2.50	.50	.63	1.75	175
TLU-200D	2000 kcmil	1/2	6.63	2.75	.50	.63	1.75	187

For blank pad, add suffix "-U" to catalog number

Above terminals can be installed with the following T&B Tooling: 12 ton head (13642), 20 ton head (21920), and 40 ton head (21940)

T&B is a registered trademark of its respective company